

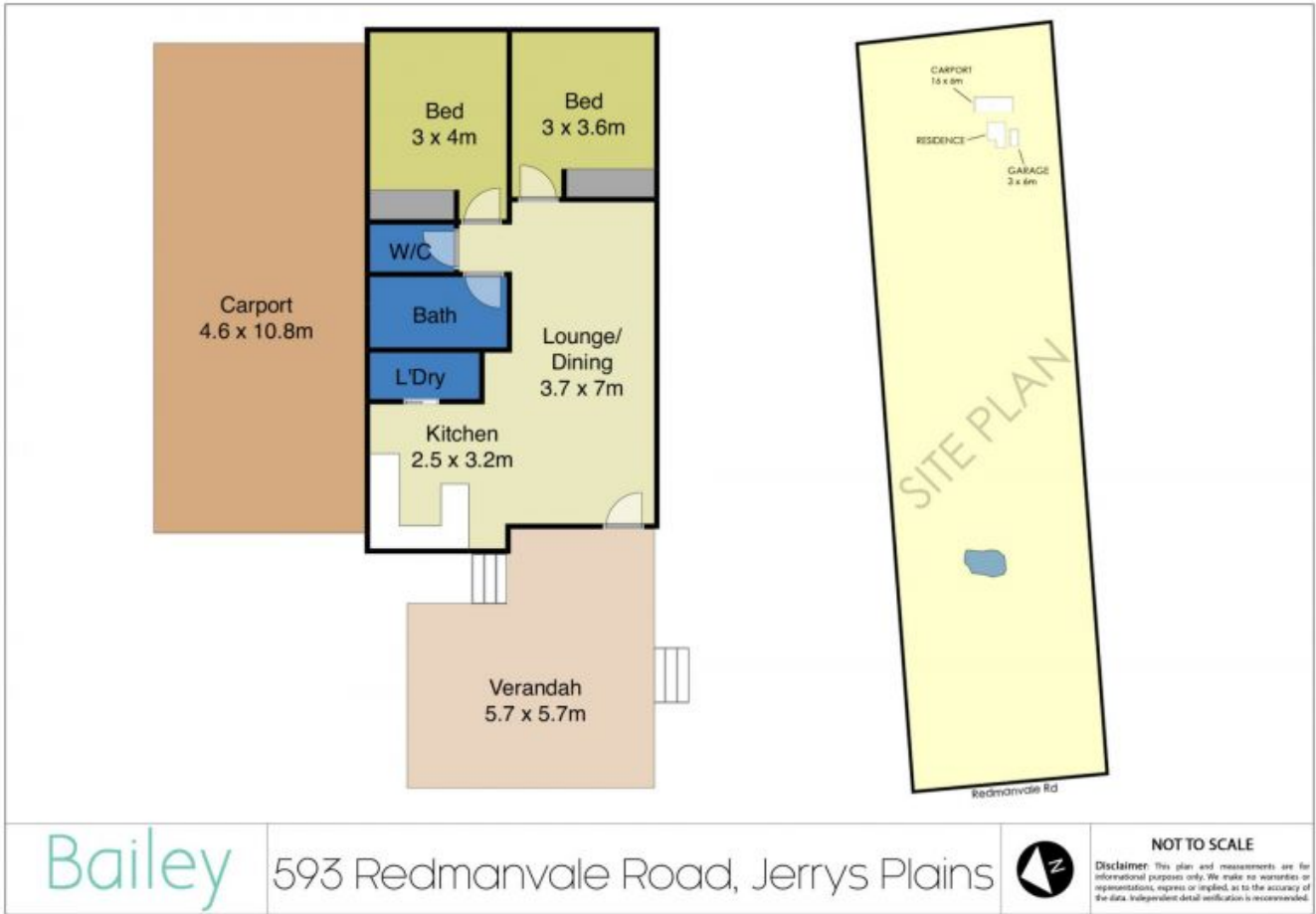
593 Redmanvale Road Jerrys Plains, NSW



## 10 Acres Perfect For Horses

- \* Neat & tidy home set on approx 10 acres
- \* 2 bedroom cottage
- \* Built in robes to both bedrooms
- \* Separate toilet to bathroom
- \* Split System AC in main bedroom
- \* Combustion fire to lounge room
- \* Timber deck overlooking paddocks
- \* Small fenced courtyard
- \* Larger house yard of approx 1 Acre
- \* double carport
- \* 5 x bay farm shed
- \* Lockable shipping container for storage
- \* Paddocks watered by 1 large dam

**Bailey Property &  
Livestock**



Bailey

593 Redmanvale Road, Jerrys Plains



NOT TO SCALE

**Disclaimer** This plan and measurements are for informational purposes only. We make no warranties or representations, express or implied, as to the accuracy of the data. Independent detail verification is recommended.