

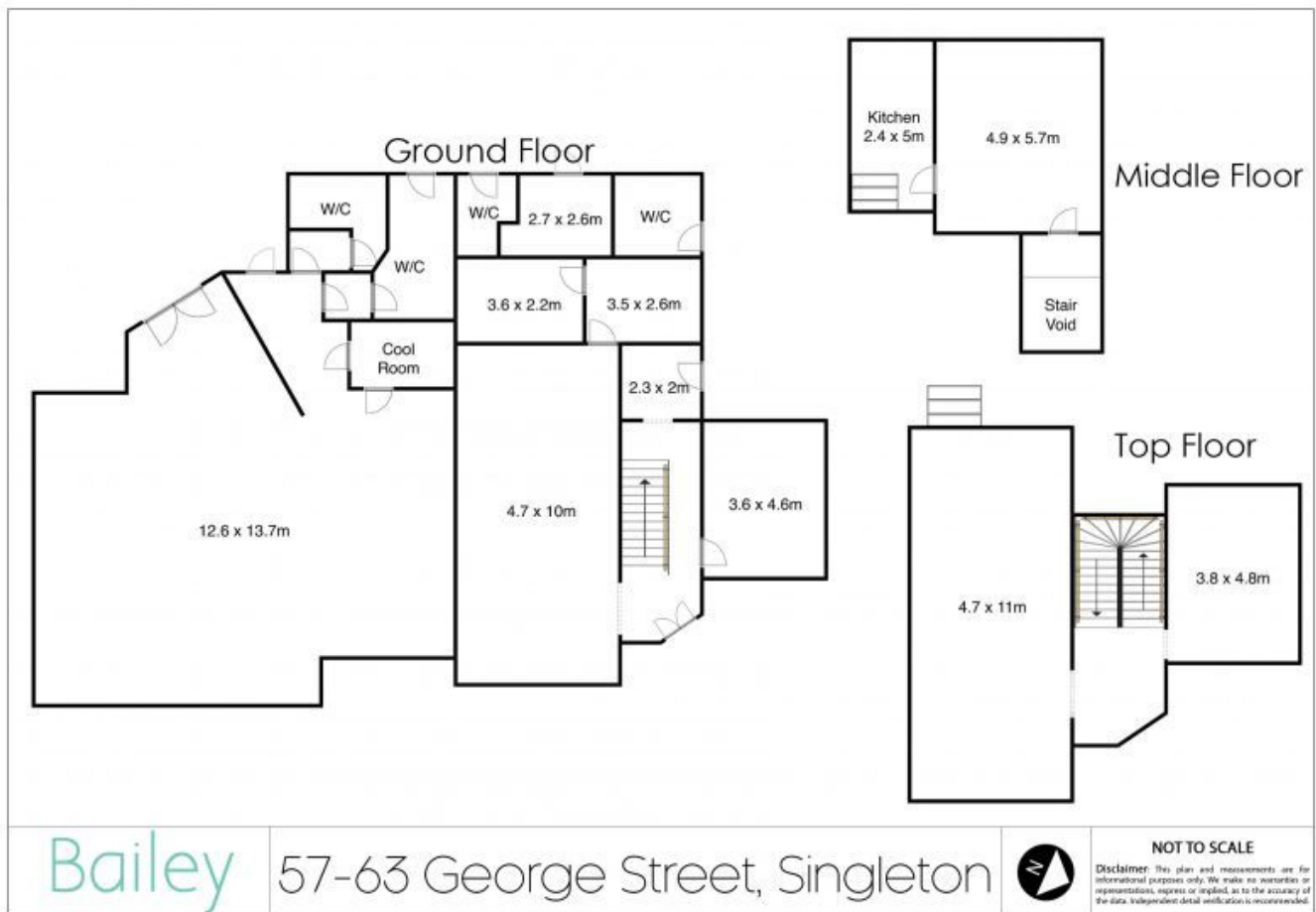
57-63 George Street Singleton, NSW

ICONIC LOCAL COMMERCIAL SITE

- 3,007.35m² zoned B6 Enterprise Corridor
- Highly exposed corner site (13,146 vehicle movements daily *RMS figures)
- Dual road frontage (Approx 116m in total)
- Excellent commercial development potential
- Magnificent building steeped in history (original Singleton Council Chambers) circa 1911
- Information Memorandum available

Scott Bailey

0407 722 705



57-63 George Street

Singleton, NSW

Bailey