



236 Westbrook Road Singleton, NSW



ESTABLISHED & READY FOR HORSES ? 10.12 HA (25 ACRES)

? 10.12 Ha (25 Acres) of gently undulating country nestled in the beautiful Westbrook Valley.

? Outstanding horse infrastructure and established fencing into 5 paddocks.

? Immaculate three bedroom home with formal lounge, kitchen with meals area, built in robes, 1 ceiling fan, slow combustion heater & 2 split system A/C's.

? Detached double garage, chicken pen & established landscaping.

? Stable complex with 6 boxes, 1 tack room & hose down area.

? 5.5m x 10.5m truck/machinery shed.

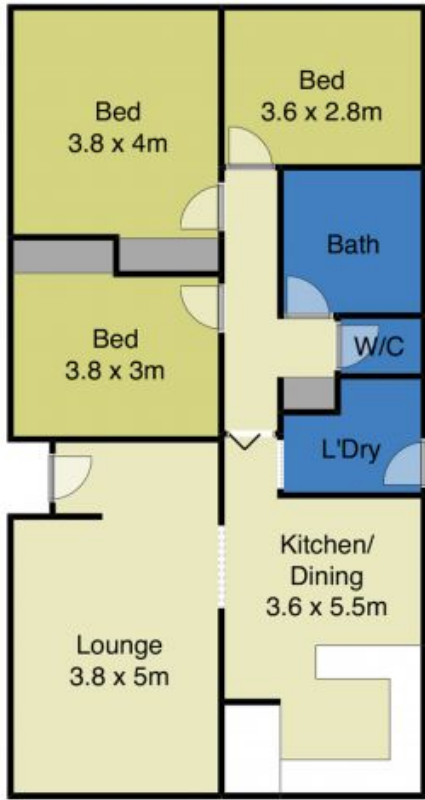
? 20 meter diameter steel round yard with conveyor belting

? 30x40 meter steel arena and conveyor belting

? Cattle loading facility

Scott Bailey

0407 722 705



Bailey

236 Westbrook Road, Westbrook



NOT TO SCALE

Disclaimer: This plan and measurements are for informational purposes only. We make no warranties or representations, express or implied, as to the accuracy of the data. Independent detail verification is recommended.