



349 Inlet Road SINGLETON, NSW



4



1

PICTURESQUE OASIS IN THE FOOTHILLS OF WOLLEMI NATIONAL PARK

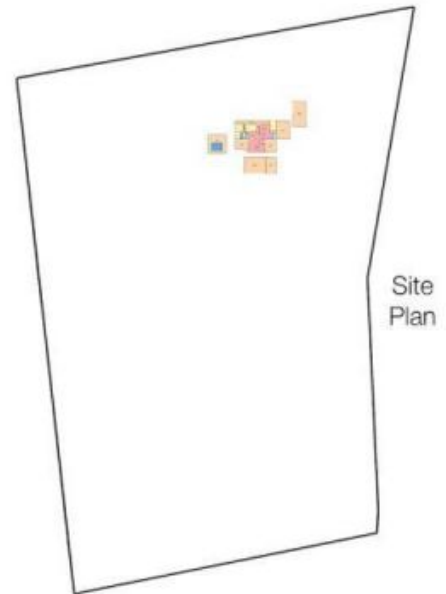
The perfect 20 acre property if you desire privacy & picturesque mountain views.

Located at the end of a quiet road you'll find this beautifully established property.

- 8.81ha (20 acres) with 2 dams + 3mL PID water
- Brick & tile home with established gardens
- Generous kitchen overlooking expansive indoor/outdoor living areas
- 4 bedrooms & 3 way bathroom
- Slow combustion fire & S/S R/C air conditioning
- 12x6m lock-up barn style shed + 10x6m 3 bay machinery shed with one lock-up bay

Scott Bailey

0407 722 705



firstnational REAL ESTATE | Max Bailey

349 Inlet Rd, Bulga

349 Inlet Road

SINGLETON, NSW

Bailey